

Syllabus for CSO is available at <https://www.crestolympiads.com/cso-syllabus>

**Pattern And Marking Scheme**

Class	Topic/Section	No. of Questions	Marks per Questions	Total Marks
	Practical Science	25	1	25
1 <sup>st</sup> to 4 <sup>th</sup>	Achiever's Section	10	2	20
	<b>Grand Total</b>	<b>35</b>	-	<b>45</b>
	Practical Science	40	1	40
5 <sup>th</sup> to 10 <sup>th</sup>	Achiever's Section	10	2	20
	<b>Grand Total</b>	<b>50</b>	-	<b>60</b>

1. The given figure below shows a stage X in the life cycle of an organism called pupa stage. Which of the following organism will come out in the next stage of development?



- a) Butterfly  
b) Mosquito  
c) Cockroach  
d) Frog

2. Sam wrote two statements about human body in her notebook.

1. The cerebrum is in charge of thinking and memory.
2. The part of the brain in charge of the involuntary actions such as breathing, heartbeat, etc., is the cerebellum.

Choose the correct option about the above two statements.

- a) Statement 1 is correct but 2 is incorrect  
b) Statement 1 is incorrect but 2 is correct  
c) Both the statements are correct  
d) Both the statements are incorrect

# CREST – A digital initiative to enhance practical knowledge

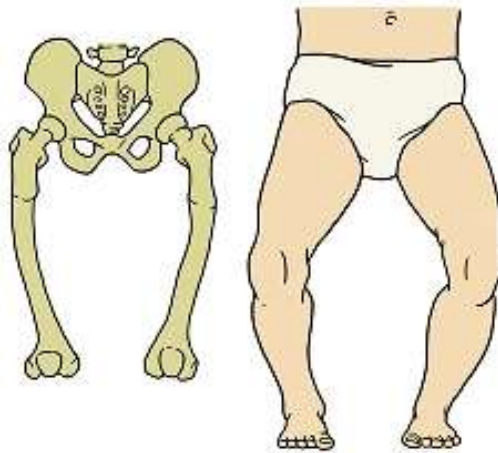
3. Which diagram correctly shows the positions of the Moon-Sun in a total solar eclipse?



- a) B
- c) D

- b) C
- d) A

4. Observe the figure shown below carefully:



Fill in the blank with a suitable term and select the correct option.

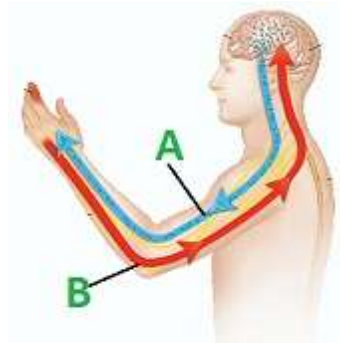
This child is suffering from \_\_\_\_\_.

- a) Scurvy
- c) Beri-beri

- b) Rickets
- d) Goitre

# CREST – A digital initiative to enhance practical knowledge

5. Look at the figure shown below:



Identify the nerves A and B, which carry orders from and to the brain or the spinal cord.

- a) A-Sensory, B-Motor  
b) A-Motor, B-Sensory  
c) A-Nerve, B-Sensory  
d) A-Motor, B-Nerve

6. Based on the given table which of the following can be added to row 2?

In- exhaustible	Exhaustible
Rainfall	Coal
X	Y

- a) X-Solar energy, Y-Water  
b) X-Iron, Y-Wind  
c) X-Petroleum, Y-Forests  
d) X-Clay, Y-Petroleum

7. Read the sentences given below and choose the INCORRECT statement(s) related to states of matter.

- A. It is very difficult to compress gases.  
B. Steel, wood and fabrics are all solid forms of matter.  
C. Most matter changes its state when more energy is added to it.  
D. Solids contract on heating.

- a) A and C  
b) B and C  
c) C and D  
d) A and D

# CREST – A digital initiative to enhance practical knowledge

8. Given below are pictures of two groups of animals:



X



Y

On what basis have they been grouped?

- a) Group X: These animals have stout legs and they walk on their hoofs.  
Group Y: These animals move noiselessly as their feet are provided with a soft pad underneath.
- a) Group X: These animals move noiselessly as their feet are provided with a soft pad underneath.  
Group Y: These animals have stout legs and they walk on their hoofs.
- b) Group X: These animals are mammals.  
Group Y: These animals are reptiles.
- c) Group X: These animals are scavengers.  
Group Y: These animals are aquatic in nature.

## Achiever's Section

9. Which of the following is an example of chemical energy getting converted to thermal energy?

1. Lightning
2. Burning gasoline in a car's engine
3. Stretched rubber band
4. Person riding bicycle down the hill
5. A car crash
6. Splitting of nuclei

- a) 1 and 3
- c) Only 6

- b) 4 and 5
- d) Only 2

# CREST – A digital initiative to enhance practical knowledge

10. What do grasshoppers and chameleons have in common?



- a) They both are parasites.
- b) They both are nocturnal animals.
- c) They both hibernate.
- d) They both change their colour and are not easily seen or spotted by their enemies.

## Answers

1.(a), 2. (a), 3. (c), 4. (b), 5. (b), 6. (d), 7. (d), 8. (b), 9 (d), 10 (d)