

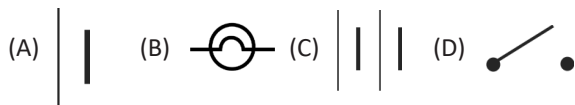
International Olympiad of Science



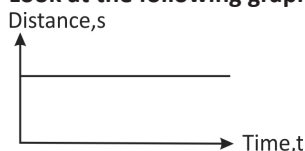
CLASS 7th SAMPLE QUESTIONS

The Actual Question Paper Contains 35 Questions. The Duration of the Test Paper is 40 Minutes.

1. Which one of the following is the symbol of an electric bulb?



2. Look at the following graph:



The above graph shows that the object is at/in:

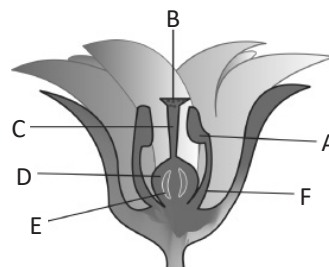
- (A) Rest (B) Motion
(C) Uniform motion (D) Uniform acceleration
3. A clinical thermometre has kink in its tube. What function does it perform?
(A) It prevents mercury from coming out of bulb
(B) It prevents back flow of mercury into the bulb
(C) It helps in connecting the mercury tube with the bulb
(D) All of these
4. In the autotrophic mode of nutrition:
(A) food is prepared from simple inorganic substances by the process of photosynthesis
(B) food is obtained from dead and decaying organic substances
(C) food is obtained from green plants
(D) food is obtained from the host
5. Name the blood cells which carry oxygen in our body.
(A) RBC (B) WBC
(C) Blood platelets (D) Antigen
6. A car moves with a speed of 40 km/h for 15 minutes, then with a speed of 60 km/h for 15 minutes, then with a speed of 48 km/h for 10 minutes, then with the speed of 30 km/h for 20 minutes. Find the average speed of the car.
(A) 42 km/h (B) 43 km/h
(C) 45 km/h (D) 47 km/h

7. In the following table, few activities are given:

Number	Activity
1.	Melting of ice
2.	Decomposition of leaves
3.	Burning of wood
4.	Evaporation of water
5.	Digestion of food
6.	Spoiling of food
7.	Painting of wooden box

Which of the preceding activities involve chemical change?

- (A) Activities 1,2,3,5 (B) Activities 2,3,4,5
(C) Activities 2,3,4,6 (D) Activities 2,3,5,6
8. An atom gets charged due to:
(A) Transfer of proton (B) Transfer of neutron
(C) Transfer of electron (D) Transfer of nucleus
9. A place X has very hot and humid climate and it receives rain throughout the year. Which type of climate does the place X have?
(A) Polar climate (B) Temperate climate
(C) Tropical climate (D) Desert climate
10. Name the part of the flower, which has been represented by the letter A.



- (A) Anther (B) Stigma
(C) Filament (D) Style

ANSWERS

1. (B) 2. (A) 3. (B) 4. (A) 5. (A) 6. (B) 7. (D) 8. (C) 9. (C) 10. (A)